

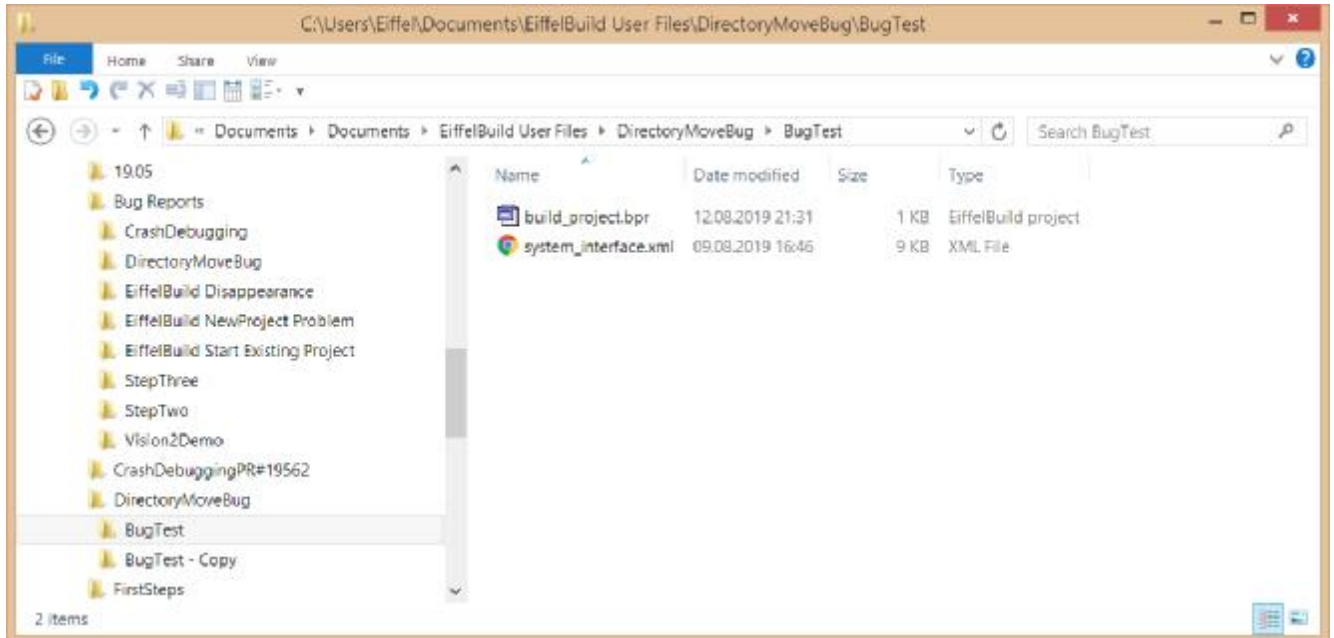
Author: [RWSchlatter@bluewin.ch](mailto:RWSchlatter@bluewin.ch)

Test location is C:\Users\Eiffel\Documents\EiffelBuild User Files\DirectoryMoveBug

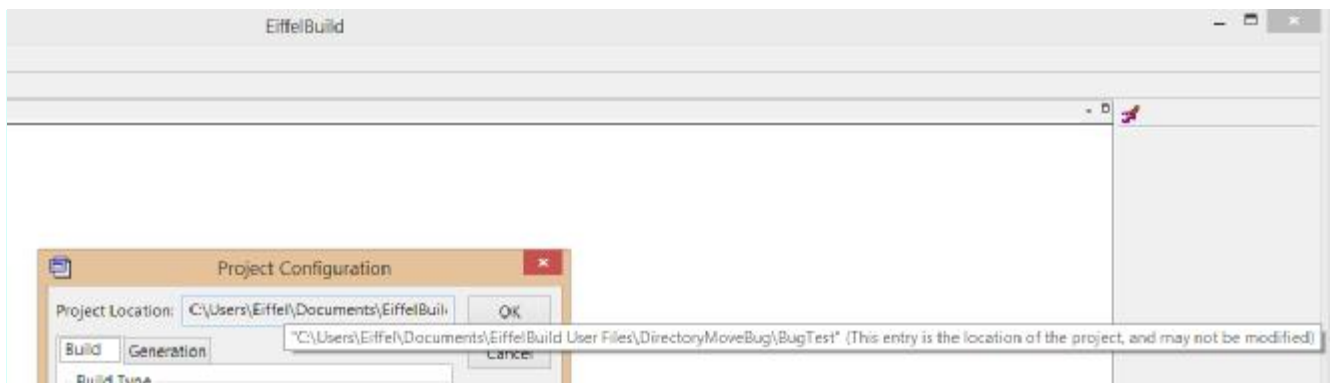
Base project for test is C:\Users\Eiffel\Documents\EiffelBuild User Files\DirectoryMoveBug\BugTest

(a copy of the FirstSteps project)

has current directory adjusted as: <Project\_Location>C:\Users\Eiffel\Documents\EiffelBuild User Files\DirectoryMoveBug\BugTest</Project\_Location>

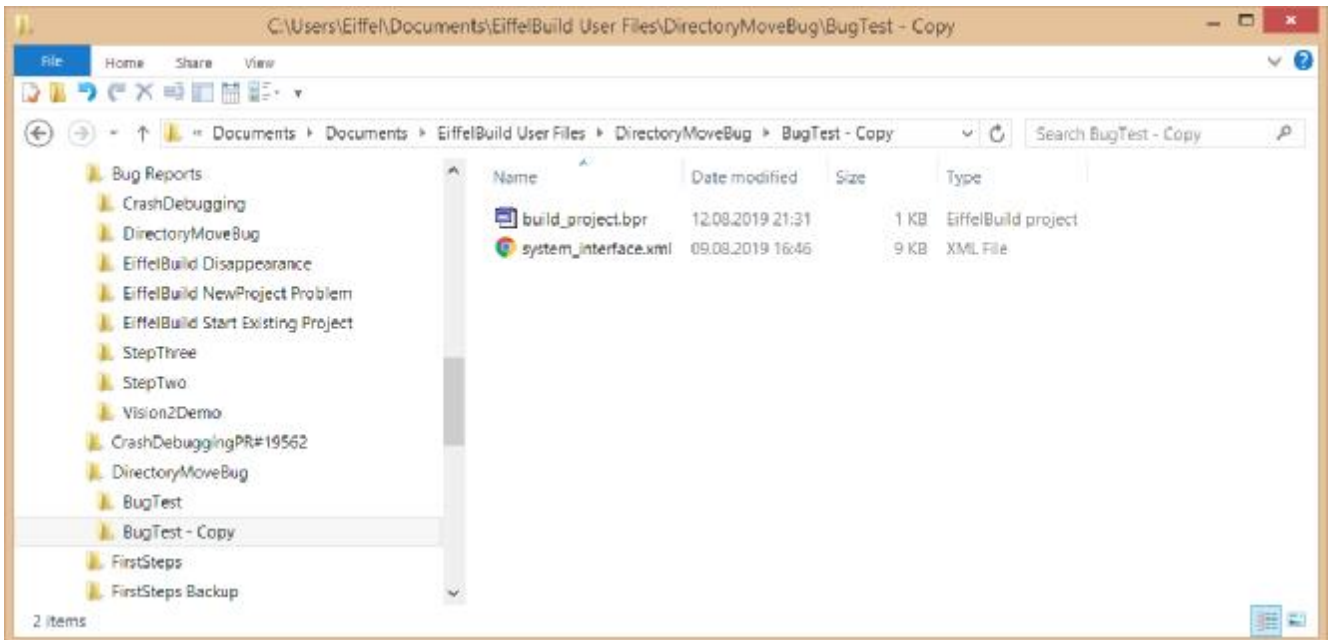


ref: 01 Original Project.png



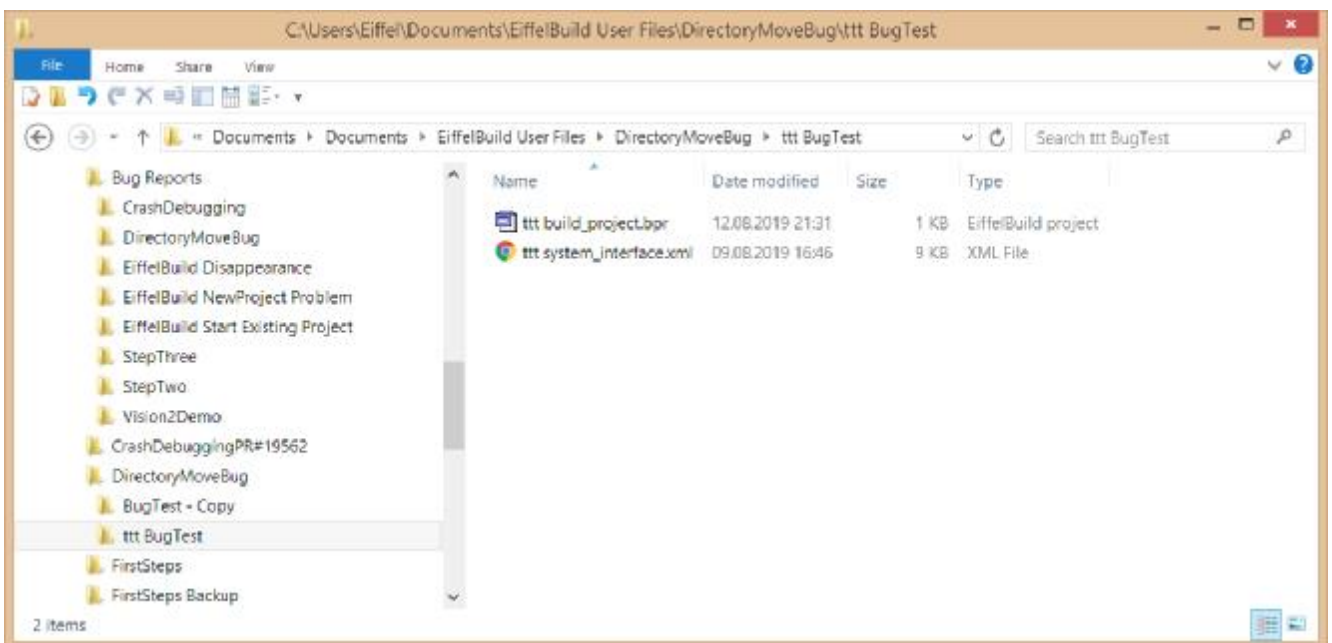
ref: 01b Original Project Configuration.png

Duplicate original directory "... \DirectoryMoveBug\BugTest" as "... \DirectoryMoveBug\BugTest - Copy"



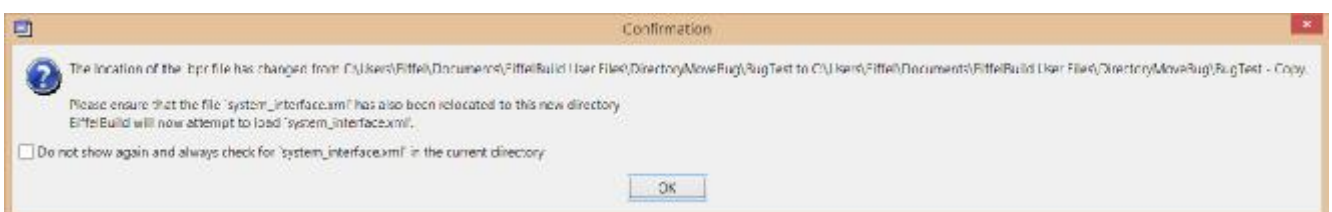
ref: 02 BugTest Copy.png

Rename both original directory and its files with ttt prefix as backup  
Reason: make sure EiffelBuild cannot see origin

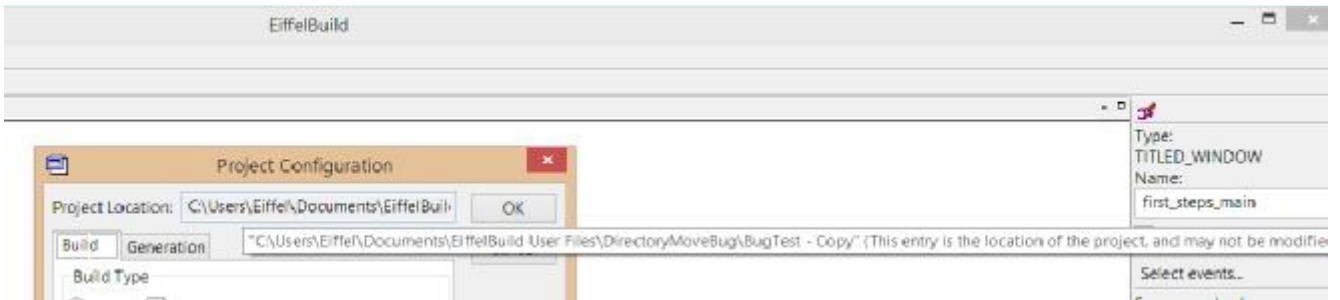


ref: 03 Original renamed.png

Ensure registry "`BOOLEAN_graphical_elements_dialogs_show_project_location_changed_warning`" = True  
In Directory "BugTest - Copy" double click on build\_project.bpr  
EiffelBuild requests confirmation for "system\_interface.xml" in no longer existing directory!  
Leave "don't-show" untouched, click OK

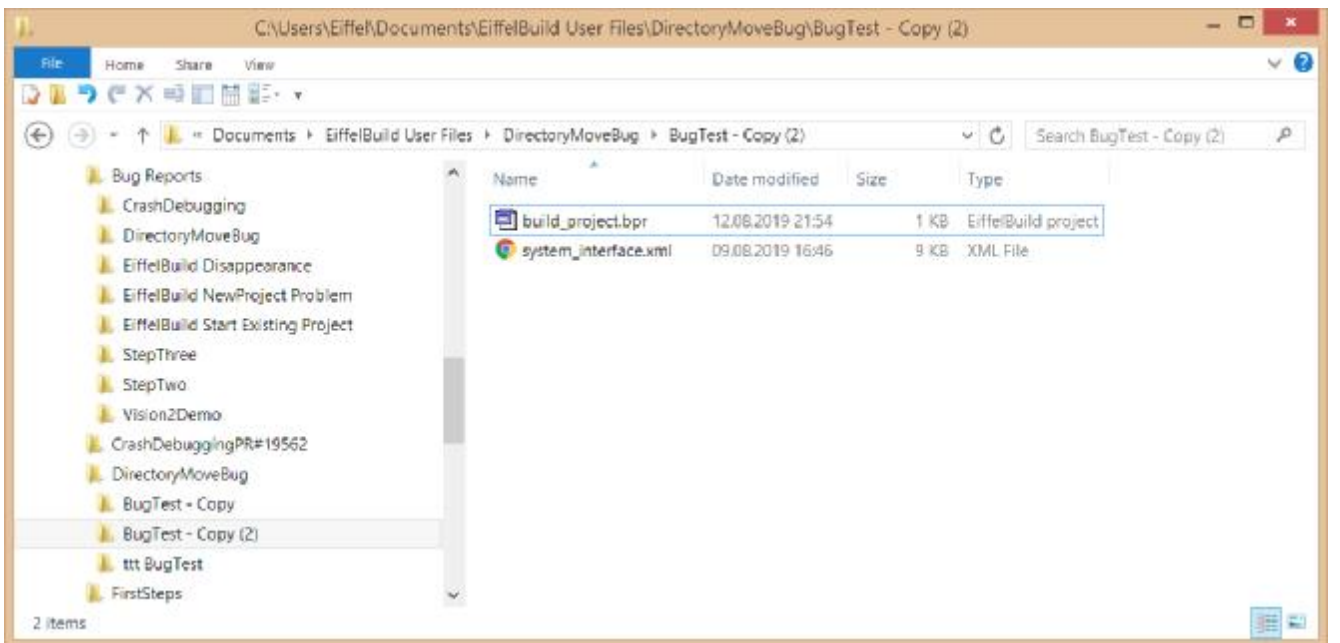


ref: 04 EiffelBuild Confirmation request dir change.png



ref: 04b BugTest Copy Configuration changed.png

Duplicate original directory "... \DirectoryMoveBug\BugTest" as "... \DirectoryMoveBug\BugTest - Copy(2)"  
(continue keep it renamed with prefix ttt)



ref: 05 BugTest Copy(2).png

Ensure registry "`BOOLEAN_graphical_elements_dialogs.show_project_location_changed_warning`" = True

In Directory "BugTest - Copy(2)" double click on "build\_project.bpr"

EiffelBuild requests confirmation for "system\_interface.xml" in no longer existing directory!

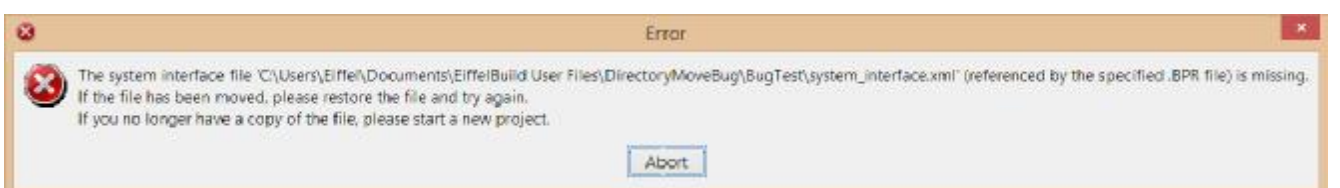
But this time mark "don't-show" checkbox, which currently implies OK (bad GUI implementation)

EiffelBuild shows error message that it has not found "system\_interface.xml" in original directory!

Abort button ends processing.

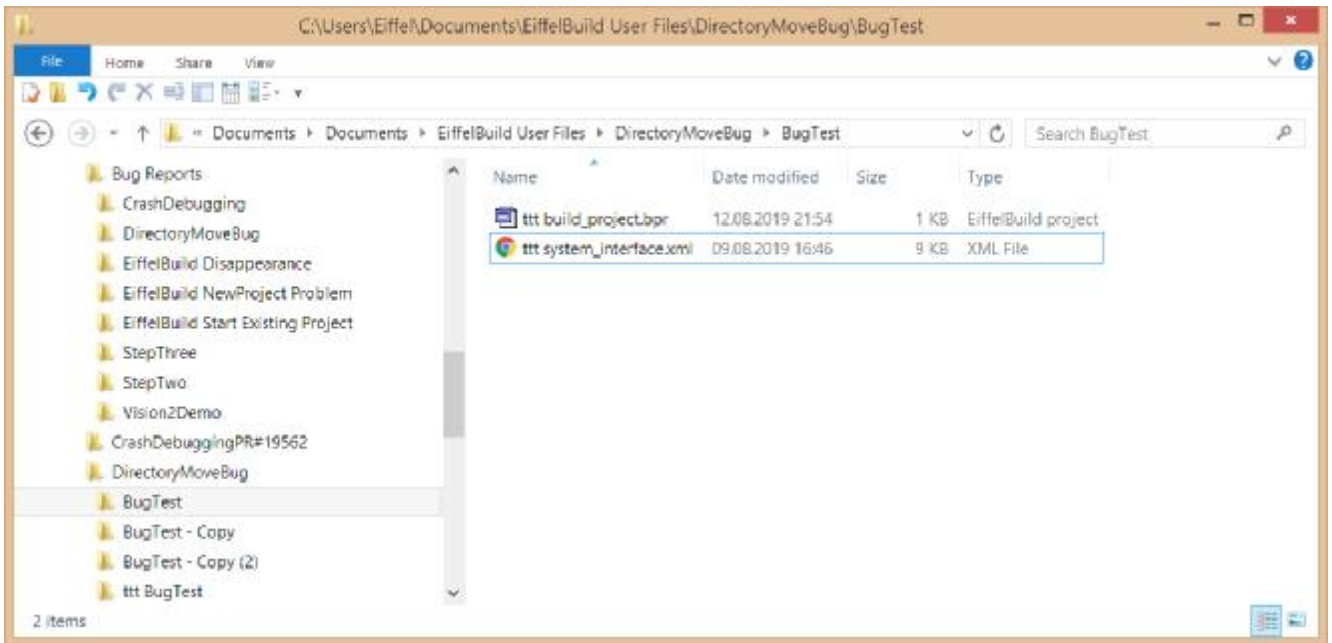
The "don't-show" choice is remembered in the Windows Registry.

The project file "... \DirectoryMoveBug\BugTest - Copy(2)" remains unchanged.



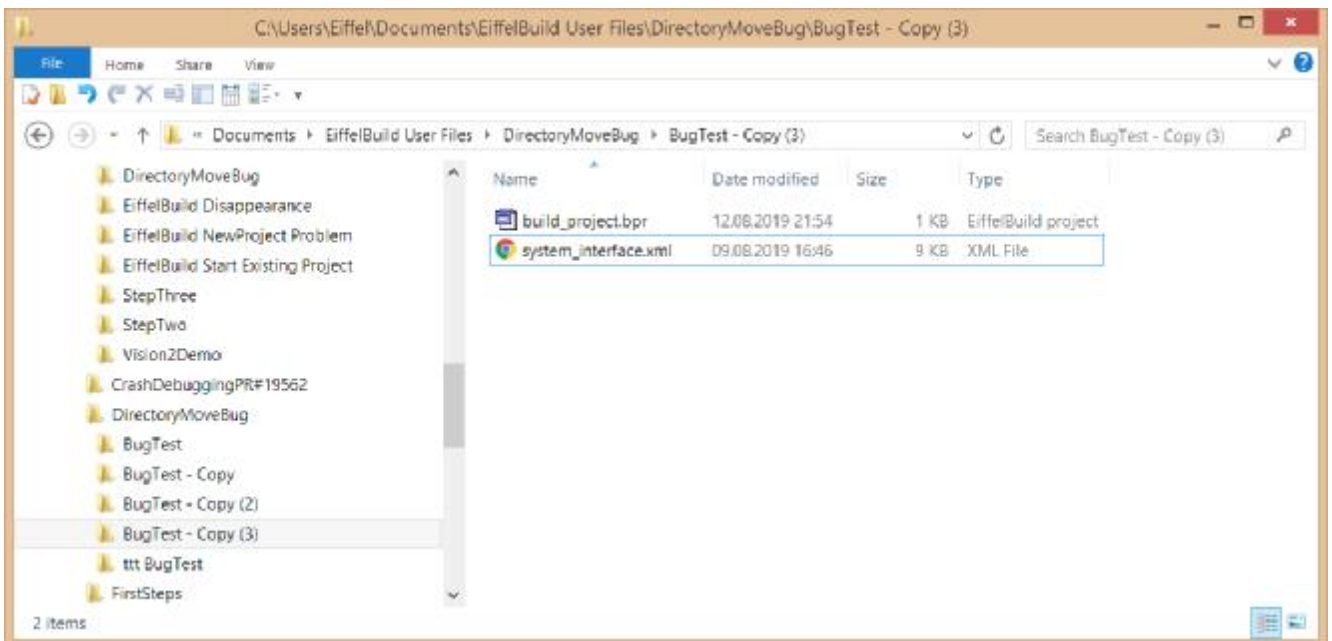
ref: 05b systinfcxml not found original dir.png

Rename the ttt prefixed directory back to original but keep its files with ttt prefix out of sight of EiffelBuild



ref: 06 Original Project files renamed. png

Duplicate original directory "... \DirectoryMoveBug\BugTest" as "... \DirectoryMoveBug\BugTest - Copy(3)"



ref: 07 BugTest Copy(3). png

Test similar to 04 above but now with existing original directory

Ensure registry "`BOOLEAN_graphical_elements_dialogs.show_project_location_changed_warning`" = True

In Directory "BugTest - Copy(3)" double click on "build\_project.bpr"

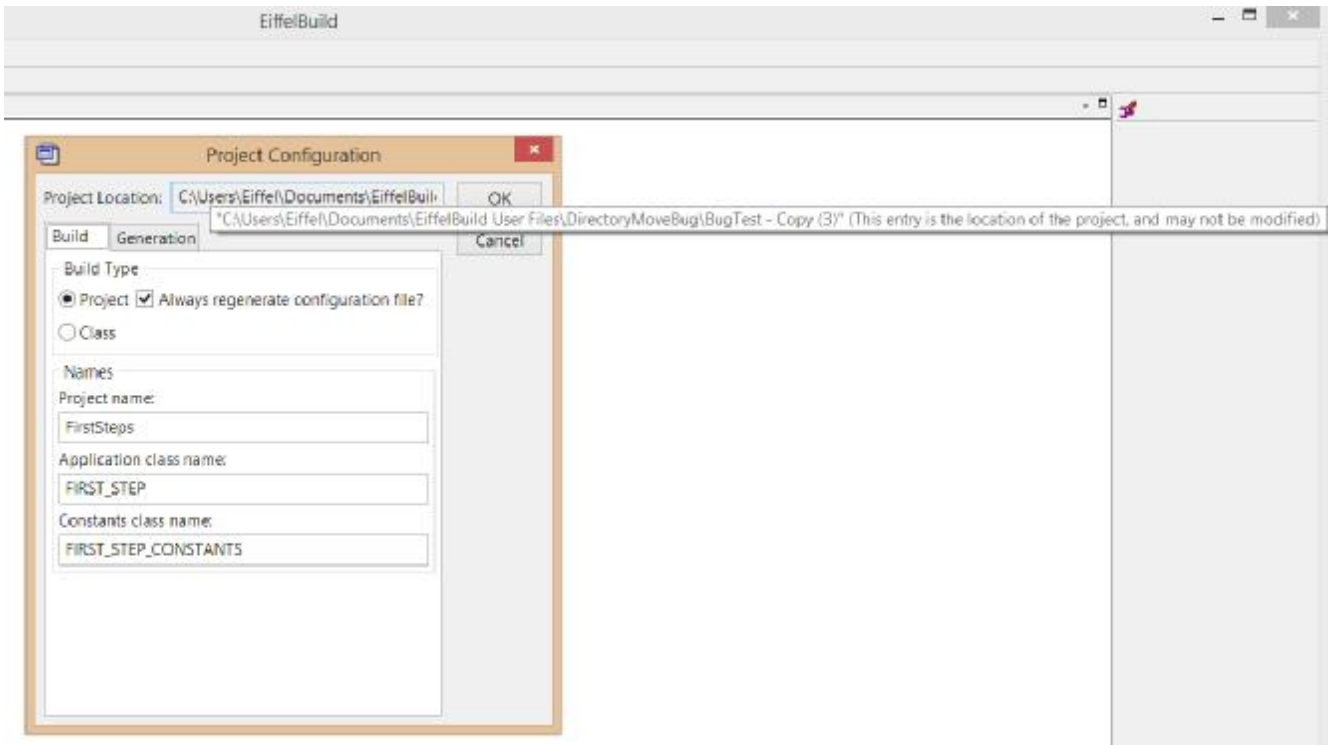
EiffelBuild requests confirmation for "system\_interface.xml" in existing original directory!

Leave "don't-show" untouched, click OK

EiffelBuild resets project file to current directory.

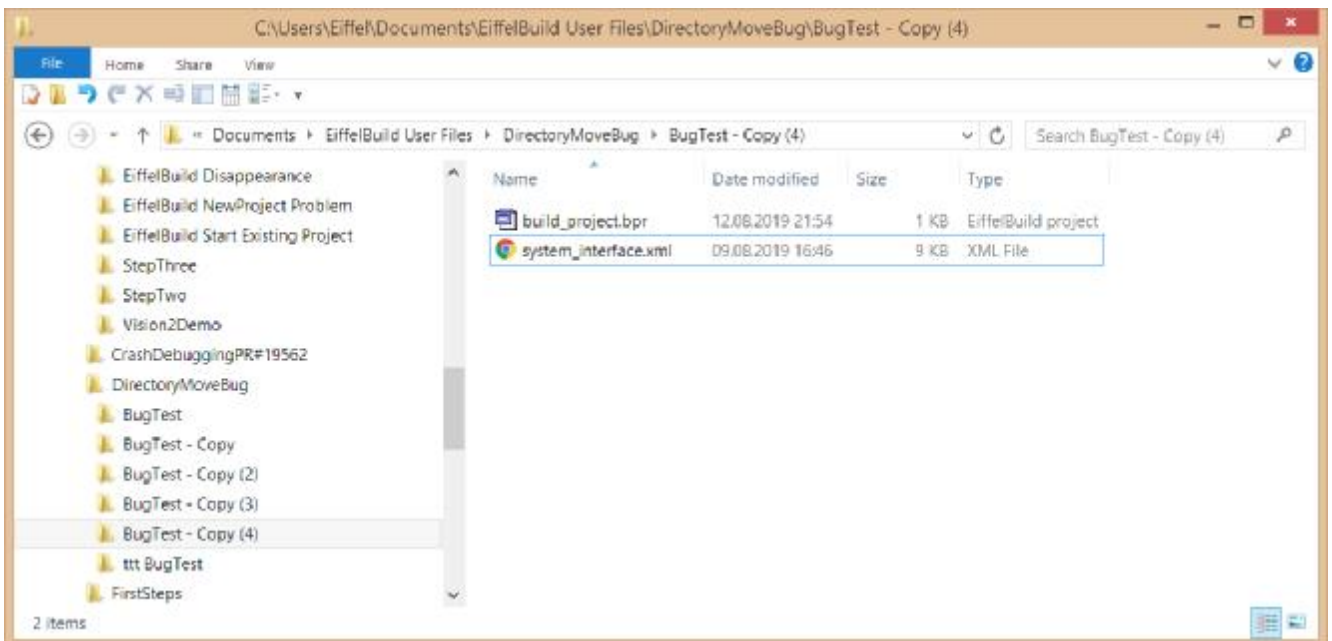


ref: 07b EiffelBuild Confirmation request dir change.png



ref: 07c BugTest Copy(3) Configuration changed.png

Duplicate original directory "... \DirectoryMoveBug\BugTest" as "... \DirectoryMoveBug\BugTest - Copy(4) "



ref: 08 BugTest Copy(4).png

Test similar to 05 above but now with existing original directory (files still



prefixed ttt)

Ensure registry `"BOOLEAN_graphical_elements_dialogs.show_project_location_changed_warning" = True`

In Directory "BugTest - Copy(4)" double click on "build\_project.bpr"

EiffelBuild requests confirmation for "system\_interface.xml" in existing original directory!

But this time mark "don't-show" checkbox, which currently implies OK (bad GUI implementation)

EiffelBuild shows error message that it has not found "system\_interface.xml" in original directory (cause prefixed ttt) !

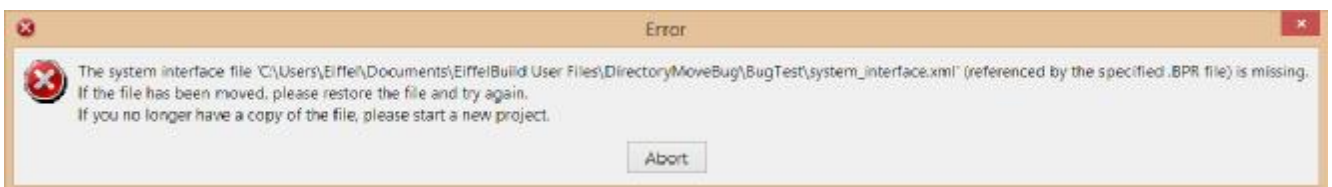
Abort button ends processing.

The "don't-show" choice is remembered in the Windows Registry.

The project file "... \DirectoryMoveBug\BugTest - Copy(4)" remains unchanged.



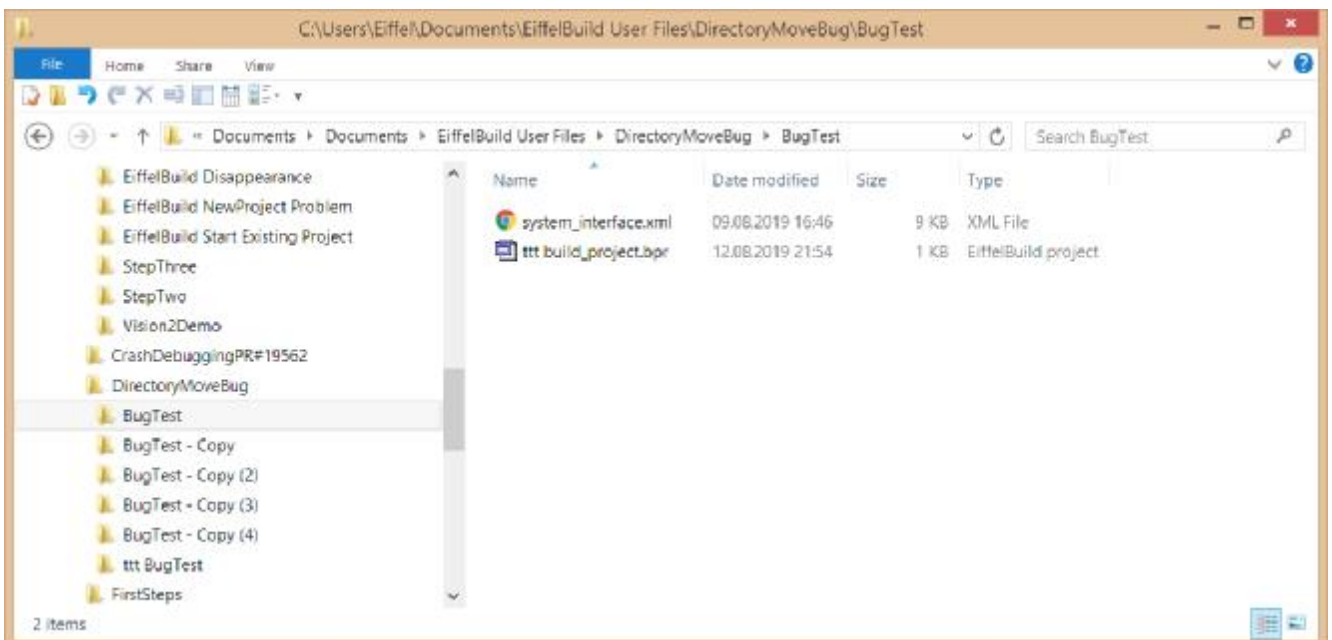
ref: 08b EiffelBuild Confirmation request dir change.png



ref: 08c systinfcxml not found original dir.png

---

In original directory "... \DirectoryMoveBug\BugTest" remove the ttt prefix from "system\_interface.xml"



ref 09 Original Project file systinfcxml original name.png

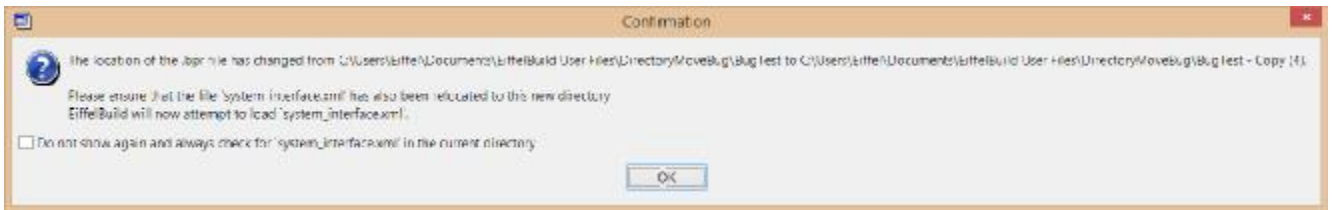
---

Test similar to 04 above but now with existing original directory and with "system\_interface.xml"

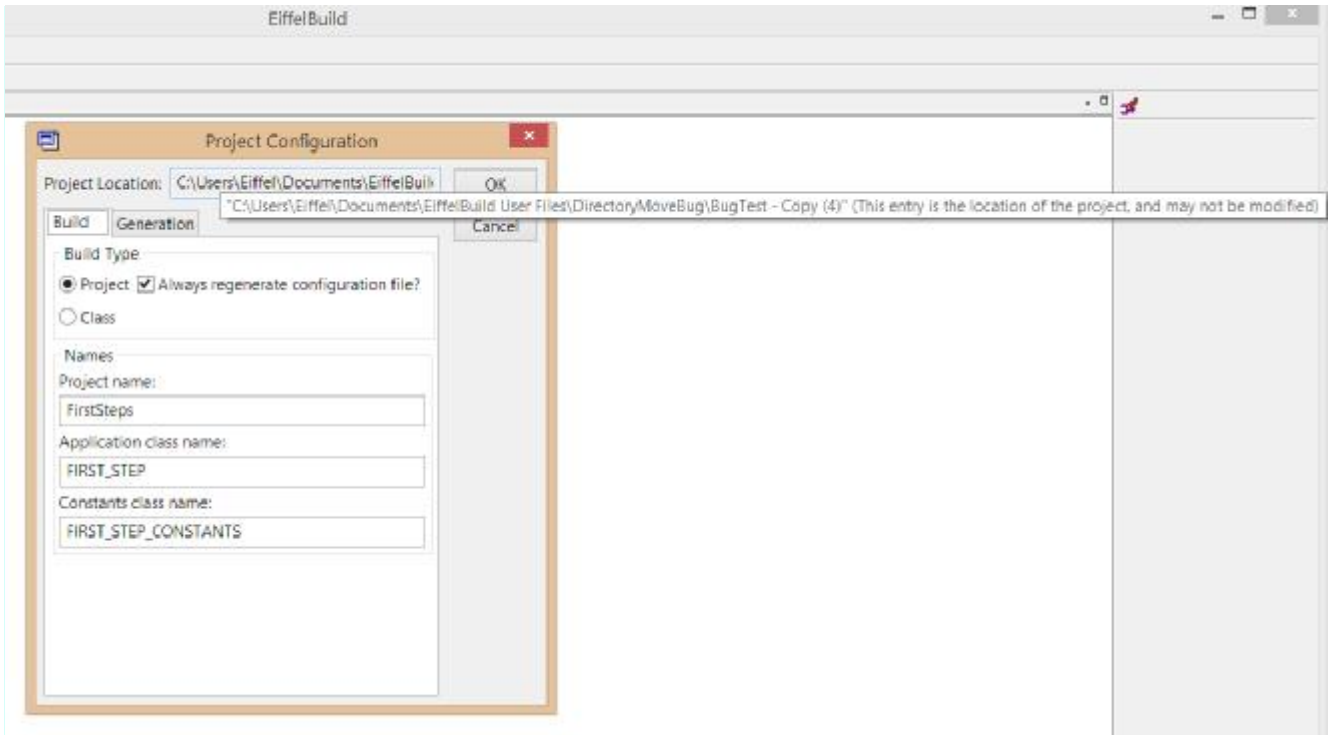
Ensure registry `"BOOLEAN_graphical_elements_dialogs.show_project_location_changed_warning" = True`

In Directory "BugTest - Copy(4)" double click on "build\_project.bpr"

EiffelBuild requests confirmation for "system\_interface.xml"  
Leave "don't-show" untouched, click OK  
EiffelBuild resets project file to current directory.

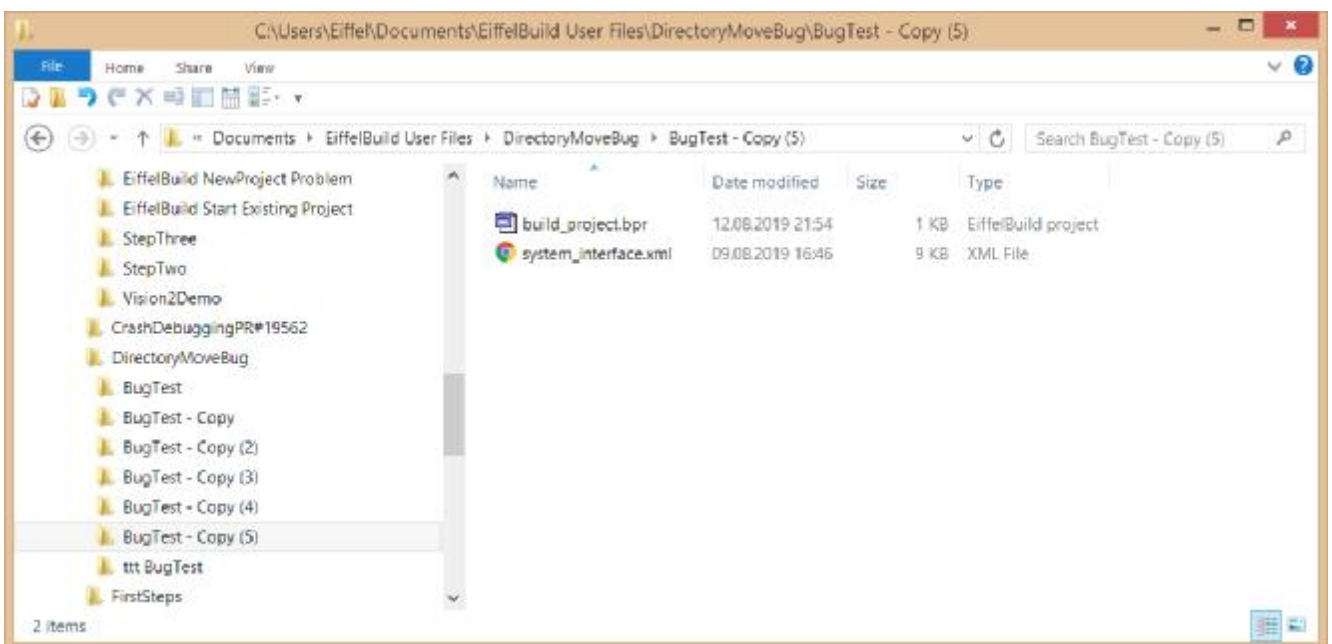


ref: 09b EiffelBuild Confirmation request dir change.png



ref: 09c BugTest Copy(4) Configuration changed.png

Duplicate original directory "... \DirectoryMoveBug\BugTest" as "... \DirectoryMoveBug\BugTest - Copy(5)"



ref: 10 BugTest Copy(5).png

Test similar to 05 above but now with existing original directory and with "system\_interface.xml"

Ensure registry "BOOLEAN\_graphical\_elements\_dialogs.show\_project\_location\_changed\_warning" = True

In Directory "BugTest - Copy(5)" double click on "build\_project.bpr"

EiffelBuild requests confirmation for "system\_interface.xml"

But this time mark "don't-show" checkbox, which currently implies OK (bad GUI implementation)

EiffelBuild displays project without error message!

But the Project Configuration remains set to the original location

"... \DirectoryMoveBug\BugTest"

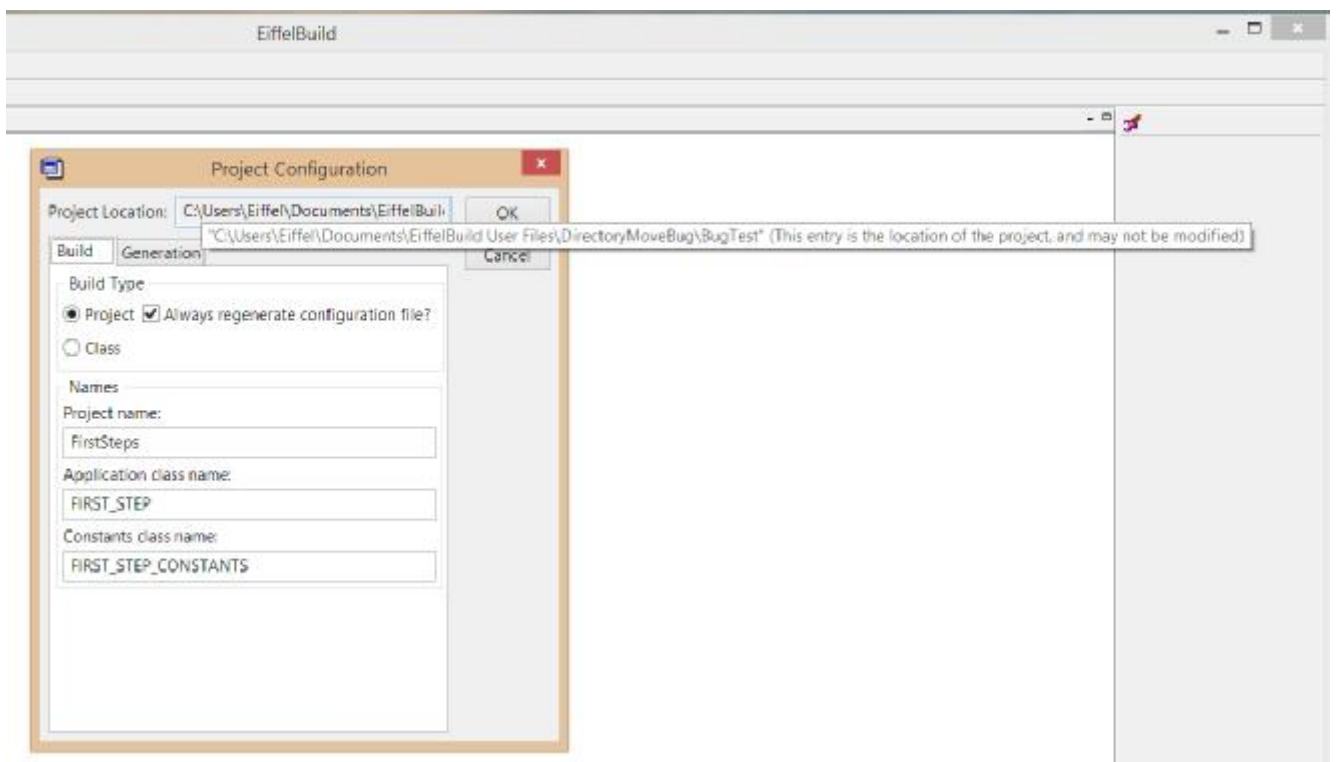
The "don't-show" choice is remembered in the Windows Registry.

The project file "... \DirectoryMoveBug\BugTest - Copy(5)" remains unchanged at this point in time.

#####  
 ##### DANGER DANGER DANGER DANGER DANGER DANGER #####  
 Any changes made to the presented project are made on the files of the original directory and not to the copy in the current directory (here copy 5) including sending a Eiffel generation over there !!!  
 #####  
 #####



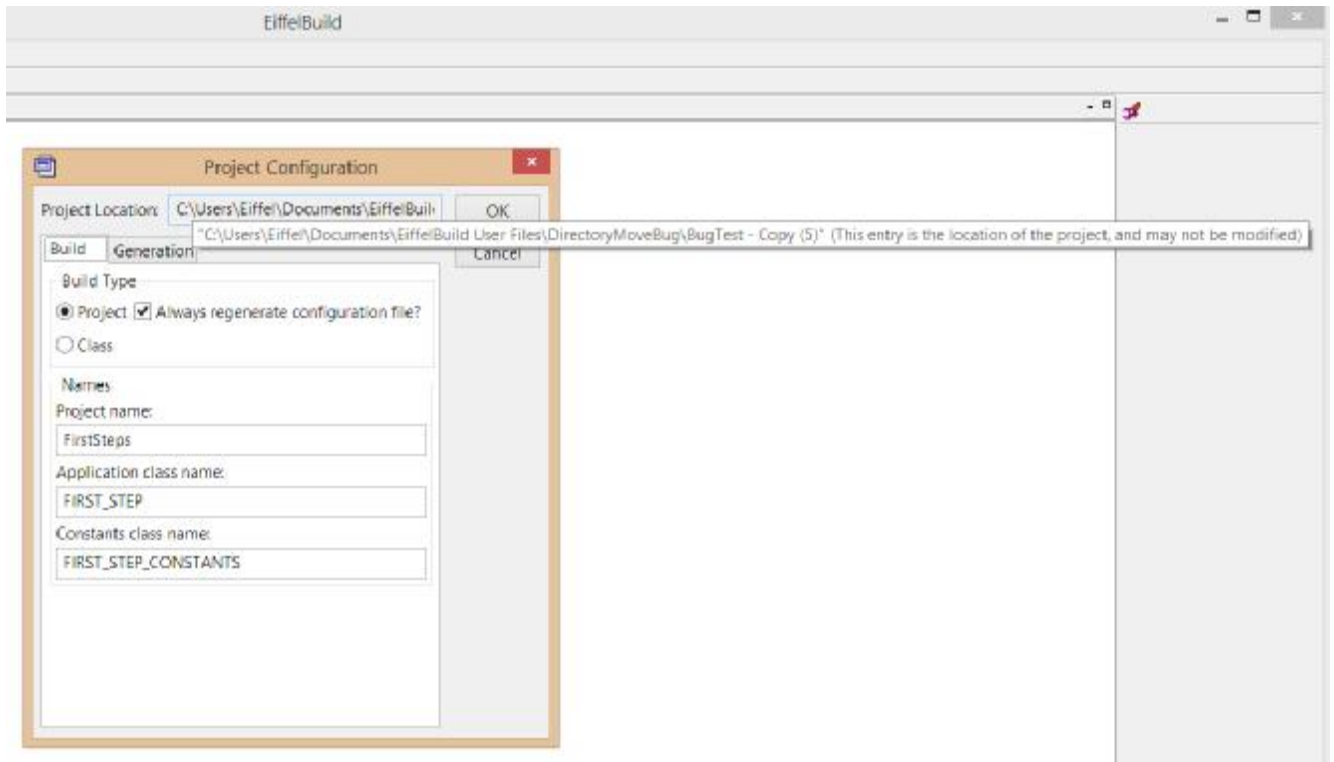
ref: 10b EiffelBuild Confirmation request dir change.png



ref: 10c BugTest Copy(5) Configuration no change.png



In Directory "BugTest - Copy(5)" double click on "build\_project.bpr"  
EiffelBuild does not requests confirmation for "system\_interface.xml" cause we had marked the checkbox and the option is remembered. EiffelBuild obviously takes the OK program path quietly and modifies the project directory!



ref: 10d BugTest Copy(5) Configuration now changed. png